



INSULATION GUIDE

2021-2022







TILLMAN®
The Brand Pros Demand

Insulation Guide _____

When protecting your hands, choose the right insulation for the task. From the first frost to the largest winter storms, Tillman has the solution.

For frigid conditions, our insulations include a range of protection:

- Light 
- Moderate 
- Heavy 
- Extreme 



Insulation Guide

Tillman’s insulation selections are strategically paired with superior outer glove materials. Features like puncture, cut, and abrasion resistance, along with waterproofing, are all options in Tillman’s winter lineup. All of our insulations are exceptional, here’s the range our gloves are crafted with:



Insulation Guide

3M Thinsulate™

Powerful and thin, 3M Thinsulate™ is considered the warmest, thin apparel insulation available.

Breathable, moisture-resistant, and both machine washable and dry-cleanable, 3M Thinsulate™ traps and holds body heat while allowing moisture to escape. The fibers of 3M Thinsulate™ insulation are very fine; therefore, they're more effective at trapping warm air inside the glove. Since the fibers are so fine, many of them can be packed into a space to reflect back more body heat.

3M Thinsulate™ insulations are broken down by grams per square meter of insulation. The colder the temperature, the higher gram insulation the user will want. However, the higher the gram, the less flexibility they will have.

▪ 40 gram:

For cool conditions and higher activity levels; will be less bulky than the 100 gram, but offers supreme cold protection. Tillman's 1414CW is top grain pearl Cowhide palm with a split Cowhide back, knitted wrist and forefinger with touch screen capabilities.



1414CW
3M Thinsulate™
40 gram



▪ 100 gram:

For very cold conditions, and lighter activity levels; **Note:** 80-100 grams is perfect for average winter days above 20° F. Tillman's 1403 also has Watershield™ water resistant molecular coating - water won't soak through the leather.



1403
3M Thinsulate™
100 gram



Pile

This is a thicker heavyweight synthetic wool material. Made for moderate cold conditions, Pile is soft and dense, and insulates extremely well. Unlike Thinsulate, Pile absorbs moisture. Tillman's 1450 combines split Cowhide and Pile insulation for a rugged, cold-combatting protection.



1450
Pile



Fleece

Fleece is a common lightweight option, warmer than Cotton/Foam linings, and still less bulky than some insulations. Tillman's 1438 combines top grain Goatskin, for abrasion resistance and a Fleece lining.



1438
Fleece



Insulation Guide

Polar Fleece

Soft napped insulating fabric made from polyester with moderate warmth. Warmer and little thicker than cotton/foam, while being less bulky than some insulations. Tillman's **1581** delivers a blue Polar Fleece lining with Coldblock™ (poly/cotton).



1581
Polar Fleece

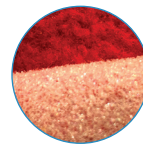


Cotton/Foam

Cotton/Foam insulation is a lightweight, economical option for moderate to cold conditions. A barrier of air is created between the glove and your hand; it provides warmth & absorbs moisture for the most demanding task environments. Tillman's **1578** offers a traditional canvas back and leather palm work glove with a Cotton/Foam lining.



1578
Cotton/Foam

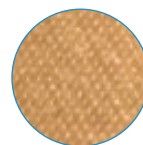


Cold Block™ (poly/cotton)

Tillman's own insulation innovation, featuring the breathability of cotton, combined with the warmth of polyester. Provides protection in moderate cold environments, while being lightweight for mobility. Tillman's **1568** combines Cold Block™ insulation in a traditional canvas back and leather palm work glove.



1568
Cold Block™
(poly/cotton)

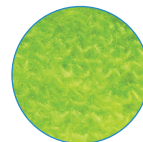


Acrylic Shell

A lightweight and very effective insulation, acrylic terry is a synthetic that delivers warmth on chilly days and also absorbs moisture. Tillman's **1772** and **1773** have A2 cut resistance and are high Viz with either a nitrile coating (1772) or latex coating (1773). Both are superior for dry, oily or wet conditions.



1773
Acrylic Shell



Insulation Guide

Winter Glove Matrix

Winter	Palm Leather	Back of Hand Material	Cuff Type	Wrist	Finger Reinforcements
865	Top Grain Deerskin	Top Grain Deerskin	Rolled	Shirred Elastic	Standard
1403	Top Grain Goatskin	Top Grain Goatskin	Rolled	Shirred Elastic	Standard
1404	Select Shoulder Split Cowhide	Select Shoulder Split Cowhide	Rolled	Shirred Elastic	Double Stitched
1412	Top Grain Pigskin	Top Grain Pigskin	Rolled	Shirred Elastic	Standard
1414CW	Top Grain Cowhide	Split Cowhide	Knitted	Knitted	Index Finger Double Stitching & Touchscreen Capabilities
1419	Top Grain Pigskin	Top Grain Pigskin	Rolled	Shirred Elastic	Standard
1425	Top Grain Cowhide	Top Grain Cowhide	Cotton	Shirred Elastic	Index Finger Double Stitching
1438	Top Grain Goatskin	Top Grain Goatskin	Cotton	Shirred Elastic	Standard
1450	Select Shoulder Split Cowhide	Select Shoulder Split Cowhide	Rolled	Shirred Elastic	Index Finger Double Stitching
1469	DuPont™ Kevlar®	Spandex	Neoprene Elastic	Elastic	Silicone Tip Thumbs and 2 Fingers & Touchscreen Capabilities
1485	Top Grain Pigskin, Rough Side Out Double Palm	Spandex, Top Grain Leather Bolsters	Elastic	Elastic	Leather Tips
1486	Top Grain Pigskin, Rough Side Out Double Palm	Spandex, Top Grain Leather Bolsters	Elastic	Elastic	Leather Tips
1495	Top Grain Goatskin, Double Padded Palm	Spandex	Elastic	Elastic	Double Reinforced Fingertips
1565	Top Grain Pigskin	Canvas/Top Grain Pigskin Knuckle Strap	Safety Cuff	Shirred Elastic	Standard
1567	Top Grain Pigskin	Canvas/Top Grain Pigskin Knuckle Strap	Knitted	Knitted	Standard
1568	Select Shoulder Split Cowhide	Canvas/Select Shoulder Split Cowhide Knuckle Strap	Safety Cuff	Shirred Elastic	Standard
1573	Select Shoulder Split Cowhide	Canvas/Split Cowhide Knuckle Strap	Heavy Duty Safety Cuff	Shirred Elastic	Standard
1578	Split Cowhide	Canvas/Split Cowhide Knuckle Strap	Heavy Duty Safety Cuff	Shirred Elastic	Standard
1581	Split Cowhide	Polar Fleece	Fleece	Shirred Elastic	Standard
1584	Split Cowhide	Polar Fleece	Fleece	Shirred Elastic	Standard
1586	Split Cowhide	Polar Fleece	Fleece	Shirred Elastic	Standard
1590	Top Grain Pigskin	Spandex	Knitted	Knitted	Standard
1592	Top Grain Deerskin	Spandex	Knitted	Knitted	Standard
1772	Nitrile Coated	Polyester	Knitted	Knitted	Sandy Nitrile Grip
1773	Latex Coated	Polyester	Knitted	Knitted	Sandy Latex Grip

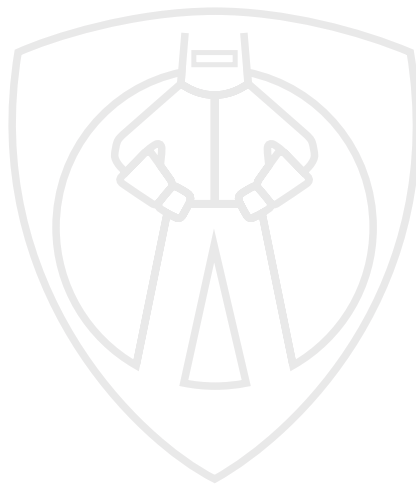
Insulation Guide

Winter	Thumb	Lining	Lining Grams/ Thickness	Water Resistance	Cut Resistance	TrueFit®	Color	Sizes
865	Keystone	3M Thinsulate™	100 Gram	-	-	-	Gold	M, L, XL, 2X
1403	Keystone	3M Thinsulate™	100 Gram	Yes	-	-	Black	M, L, XL, 2X
1404	Keystone	Fleece	-	-	-	-	Bourbon Brown	M, L, XL, 2X
1412	Keystone	Fleece	-	-	-	-	Pearl	S, M, L, XL
1414CW	Keystone	3M Thinsulate™	40 Gram	Yes	-	-	Pearl/Bourbon Brown	S, M, L, XL, 2X, 3X
1419	Keystone	3M Thinsulate™	100 Gram	Pigskin Naturally Moisture Resistant	-	-	Pearl	S, M, L, XL
1425	Keystone	Fleece	-	-	-	-	Pearl	S, M, L, XL
1438	Keystone	Fleece	-	-	-	-	Pearl	M, L, XL
1450	Keystone	Heavy Duty Pile	-	-	-	-	Bourbon Brown	M, L, XL, 2X
1469	Standard	3M Thinsulate™	40 Gram	-	DuPont™ Kevlar® Palm	Yes	Blue/Black	S, M, L, XL, 2X, 3X
1485	Standard; Reinforced Thumb	3M Thinsulate™	40 Gram	Pigskin Naturally Moisture Resistant	-	Yes	Pearl/Blue	M, L, XL, 2X
1486	Standard; Reinforced Thumb	3M Thinsulate™	40 Gram	-	-	Yes	Taupe w/Hi Viz Orange and 3M Reflective Strip	M, L, XL, 2X
1495	Standard; Reinforced Thumb w/Side Bolsters	3M Thinsulate™	40 Gram	Pigskin Naturally Moisture Resistant	-	Yes	Blue/Yellow w/White Accents	M, L, XL, 2X
1565	Wing	3M Thinsulate™	100 Gram	-	-	-	Pearl/Striped Canvas	L, XL
1567	Wing	3M Thinsulate™	100 Gram	-	-	-	Pearl/Striped Canvas/Blue	L, XL
1568	Wing	Coldblock™ Poly/Cotton	-	Waterproof Liner	-	-	Blue/Gold	L, XL
1573	Wing	Coldblock™ Poly/Cotton	-	Waterproof Liner	-	-	Black/Gold	L
1578	Wing	Cotton/Foam	-	-	-	-	Bourbon Brown/Gold	L, XL
1581	Standard	Coldblock™ Poly/Cotton	-	-	-	-	Blue/Blue	S, M, L, XL
1584	Standard	Coldblock™ Poly/Cotton	-	-	-	-	Blue/Gray	S, M, L, XL
1586	Standard	Coldblock™ Poly/Cotton	-	-	-	-	Black/Green Camouflage	L, XL
1590	Standard	3M Thinsulate™	100 Gram	-	-	-	Gold/Blue	M, L, XL
1592	Standard	3M Thinsulate™	100 Gram	-	-	-	Gold/Black	L, XL
1772	Sandy Nitrile Grip	Acrylic Terry	10 Gauge	Yes	ANSI A2	-	Blue/Hi Viz Yellow	S, M, L, XL, 2X
1773	Sandy Latex Grip	Acrylic Terry	10 Gauge	Yes	ANSI A2	-	Orange/Hi Viz Orange	S, M, L, XL, 2X

Want to explore more?

For the full selection of Winter gloves, please visit:

<https://jtilman.com/resources/#Winter-Glove-Brochure>



JTillman.com

T: 800.255.5480 F: 310.764.0104 | orders@jtillman.com | John Tillman Co., Compton, CA 90220